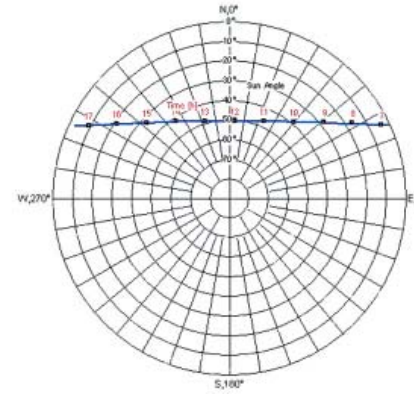
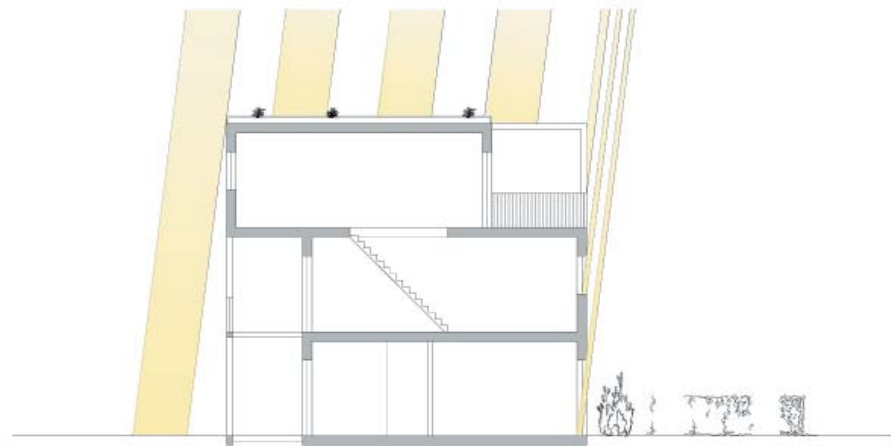


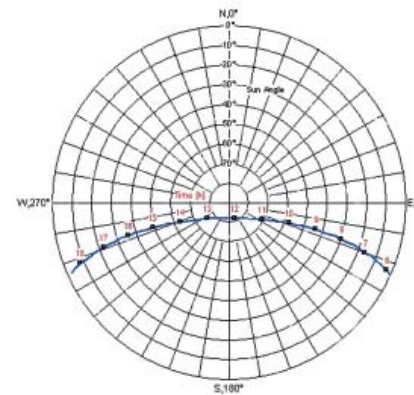
angle of the solar radiation in June scale 1:200



sunset in June



angle of the solar radiation in December scale 1:200



sunset in December

SHADING

In the Distrito Federal prevails a hot, semiarid climate: a dry winter and a hot and damp summer. The year average temperature lies between 22°C to 24°C. Here it is particularly important to protect itself against the summer sun. It can be managed constructionally with permanent or temporary shadings.